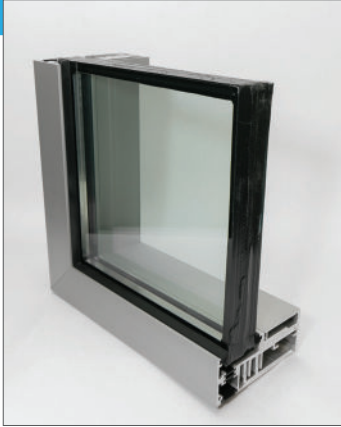


STORMDEFEND TTH600 TORNADO & HURRICANE STORM SHELTER THERMAL WINDOW SYSTEM



Innovative window solutions for tornado and hurricane protection.

PRODUCT DESCRIPTION

THIS WINDOW SYSTEM IS DESIGNED AND CERTIFIED FOR USE IN TORNADO AND HURRICANE SAFE ROOMS/STORM SHELTERS MEETING **FEMA P361 (2015 and 2021)** AND **ICC 500 (2014 and 2020)** STANDARDS. IT IS CRITICAL THIS SYSTEM BE USED IN CONJUNCTION WITH EQUIVALENT PERFORMANCE SUBSTRATE/ WALL AREAS.

FRAME DIMENSIONS

- 6" framing system
- Head, jamb, sill 2 ½" x 6"
- Mullion and intermediate horizontal members 3 ¼" x 6"

AVAILABLE CONFIGURATIONS

- Single Lite – UL Certification ZHLA.52
- Ribbon Window with Vertical or Horizontal Mullions – UL Certification ZHLA.55
- Four-Lite with Horizontal and Vertical Mullion – UL Certification ZHLA.56

NOTE: In accordance with ICC500 minimum and maximum sizes of each window configuration require testing. Please contact Insulgard to ensure job specific sizes and configurations fall within testing/certification restraints.

FEATURES

- UL Listed and labeled in accordance with ICC 500 2020
- Glazed with 2" thick TOR-GARD 30-IG glass
- Thermally broken framing system
- UL 752 Level 3 bullet resistant
- Anodized or painted finishes
- Completely fabricated and shipped fully assembled for easy installation
- Job specific anchorage requirements provided
- Designed for conventional installation and glazing methods

TESTING / CERTIFICATION

- Tested and certified by UL to meet ICC 500 2020 and FEMA P361 2021 requirements for use in tornado and hurricane safe rooms and shelters, including in the 250mph wind zone.
- Tested by UL for bullet resistance meeting UL 752 levels 3. Proof of testing can be found at www.ul.com under on-line listings.
- Thermal analysis conducted by UL utilizing NFRC test methods including ANSI/NFRC 100-2014, ANSI/NFRC 200-2014, NFRC 500-2014 and Therm 7 / Windows7 NFRC. Results available upon request.

CONSTRUCTION

- Components to be constructed from extruded aluminum 6061-T6 alloy temper or equivalent
- Fasteners to be stainless steel type 302 or 304
- Interior/Exterior glazing gaskets to be EPDM sponge and wedge
- All joints and connections will be tight, providing hairline joints and true alignment of adjacent members.
- Weep design to allow for water to exit the exterior at the sill
- Anchors to be fully concealed

APPLICATIONS

- Schools
- Law Enforcement Facilities
- Fire and Rescue Facilities
- Emergency Operations Centers
- Community Shelters
- Corporate Headquarters
- Storm Shelters
- Safe Rooms